

LEVORG



SUBARU

Confidence in Motion



Let yourself experience more.

Estate car practicality. All-Wheel Drive confidence. Sports Tourer comfort, handling and sheer driving fun. Effortless on the motorway. Exhilarating on the coast road. Comfortable and capable around town. Experience more with the SUBARU Levorg – the driver's All-Wheel Drive Tourer.

Illumination

The striking headlights have been designed to enhance the Levorg's sophisticated appeal. Powered by LEDs, these bi-functional headlights combine low and high beams and are steering-responsive, ensuring good visibility around corners at night.



Design

Levorg has a refined front bumper and a sharp front grille for a smooth and sophisticated feel.



Versatility for the modern world.

Life is busy and varied. No two days are the same. So the SUBARU Levorg design takes spontaneity in its stride. Whatever activities, sports and interests you live for, you'll have ample space to carry whatever you need.



40/20/40 Folding Rear Seats
With four settings to choose from, the 40/20/40 folding rear seats make the Levorg more versatile. Securely carry long objects with the centre seat folded down, even with two passengers seated in the back.



Wider Opening for Easier Access
Thanks to the wide opening boot door it's easy to move items in and out of the voluminous boot area. When fully extended, you'll have access to 522 litres of storage space when the seats are up.

*1 Cargo room floor length (with five occupants in vehicle).
*2 Cargo room floor width (between wheel housings).
*3 Cargo room height (directly behind rear seats).

Your world. Your space.

The SUBARU Levorg's interior is designed with your comfort in mind. Surround yourself with quality materials, supportive yet soft to the touch, carefully chosen to last the test of time.

Seating Design

Enjoy the SUBARU Levorg's engaging driving experience in comfort. Front seats support the driver and passengers in all the right places, giving you a more enjoyable and safer driving experience.



D-shaped Steering Wheel

We thought carefully about the steering wheel: after all, it's your main connection to the SUBARU Levorg driving experience. Beyond the sporty, D-shaped design, the sculpted wheel is both easy to grip and manoeuvre.



Subaru Core Technology

SUBARU's core technologies define what makes a SUBARU a SUBARU - and the unique driving experience that only our vehicles can provide. These core systems enable SUBARU vehicles to live up to the brand's exceptional standards of performance, comfort, safety, and reliability. They also underpin SUBARU's promise to deliver both driving enjoyment and peace of mind.

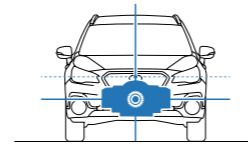
BOXER ENGINE

The horizontally-opposed configuration of the SUBARU Boxer engine places pistons 180 degrees apart for a lower, flatter profile than other engine types. One of the main benefits of this configuration is that the pistons' movements naturally counteract each other, helping to reduce vibration and noise and delivering a smoother driving experience. The engine's shape and unique piston movement allow it to be installed lower down and further back than a conventional engine, giving the whole car a low centre of gravity and balanced weight distribution for exceptional handling and poise.

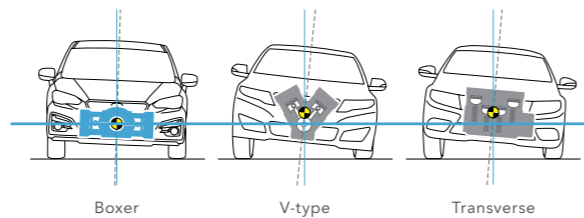


A perfectly-balanced configuration

The design, shape and position of the Boxer engine results in the car having a very balanced weight distribution. This contributes to the car's excellent handling and offers increased stability compared to V or transverse engine types. The Boxer engine, with its unique configuration, sits low in the chassis and is located further back allowing engine weight to be more evenly distributed over all four wheels.



In contrast, V and transverse engine positioning is restricted by the bulkhead. They have to sit further forward, compromising the vehicle's balance and stability. In addition, V-type engine weight is positioned above the wheel line making it top heavy. Transverse engine weight is positioned above the wheel line and is also heavier on one side. Boxer engine weight is positioned centrally in line with the wheels, making a rigid structure that is resistant to side to side motion and body roll when cornering.



SYMMETRICAL ALL-WHEEL DRIVE

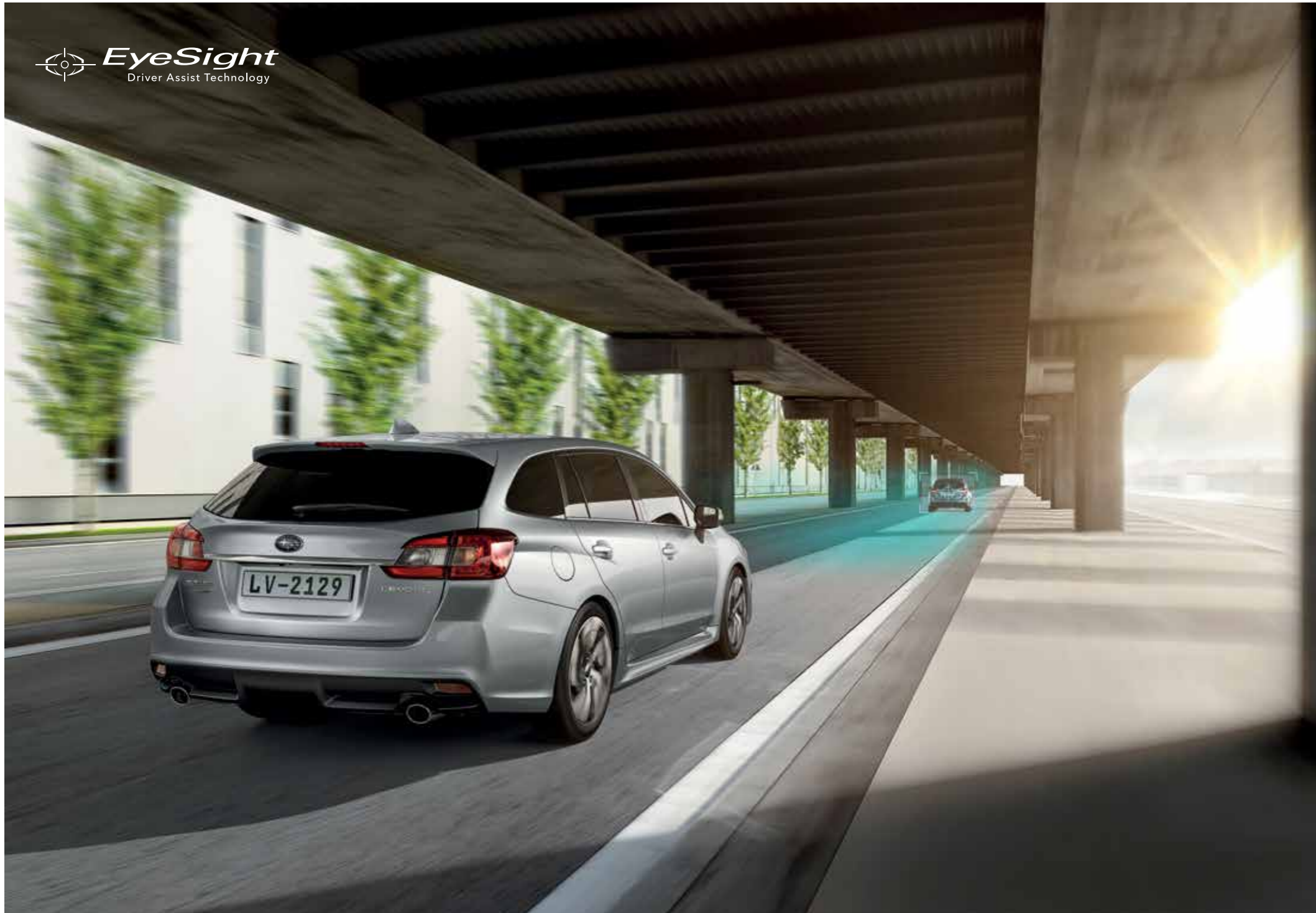
SUBARU's permanent Symmetrical AWD maximises handling and enhances control on all roads in almost any conditions. Unlike any other all-wheel drive configuration, the engine, transmission and propshaft are positioned in a symmetrical straight-line layout which provides a direct route for traction and delivers a maximum transfer of power to all four wheels at all times. The driveshafts are similar lengths, reducing torque steer and eliminating the need for additional controls or weights to be added as the symmetrical design is inherently stable, producing natural balance and performance for a safer ride.



LINEARTRONIC

SUBARU Lineartronic is a Continuously Variable Transmission that moves between a span of gear ratios to provide smooth acceleration while keeping the engine at its optimal rev range. Lineartronic works particularly well with Symmetrical AWD as it preserves momentum that is often lost during gear changes on a manual or traditional automatic transmission. When the clutch pedal is depressed on a manual or the lock-up clutch is released on a normal automatic, you break power to the wheels causing them to slow and lose performance. In contrast, Lineartronic helps to maintain traction by continuously providing power to the wheels at all times.





Subaru EyeSight Driver Assist Technology

At SUBARU, we believe in all-around safety. An important part of that is pre-collision safety: making every effort to ensure an accident never happens. That's why we created EyeSight*1, SUBARU's cutting-edge driving support system. Like a second pair of eyes for the road ahead, EyeSight uses two stereo cameras capturing three-dimensional colour images with excellent image recognition, nearly as capable as the human eye. More accurate than traditional camera and sensor technologies, EyeSight uses images from both cameras to precisely determine shape, speed and distance, meaning it not only detects vehicles but also motorbikes, bicycles and pedestrians*1. When a potential hazard is identified, it warns the driver and even applies the brakes if necessary, to help avoid an accident. With excellent safety performance, EyeSight gives the driver ultimate peace of mind.

DRIVER ASSIST

1 Adaptive Cruise Control

Adaptive Cruise Control allows the driver to set vehicle speed and distance to the car in front. It constantly monitors distance and speed then adjusts the engine, transmission and brakes accordingly to maintain speed in line with the traffic flow. Designed for use on motorways and similar roads, Adaptive Cruise Control improves driver comfort and convenience on long drives.

2 Lane Sway and Departure Warning

Lane Sway and Departure Warning will alert the driver with a visual and audible warning if the vehicle sways or departs its lane without indicating.

3 Lead Vehicle Start Alert

It's easy to become distracted when waiting in stationary traffic. EyeSight will prompt the driver to notice that vehicles in front have started moving again with a buzzer and a flashing indicator.

4 Lane Keep Assist

Lane Keep Assist will offer gentle steering control if the vehicle is about to deviate from its lane at approximately 40 mph or above.

ACCIDENT PREVENTION

5 Pre-Collision Braking System

The Pre-collision Braking System activates visual and audible warnings to alert the driver of a potential collision. If the driver fails to take evasive action, the brakes will be applied automatically to either prevent an accident entirely or reduce the severity of an impact depending on speed. If the driver brakes but does not apply enough pressure, the system will increase braking force.

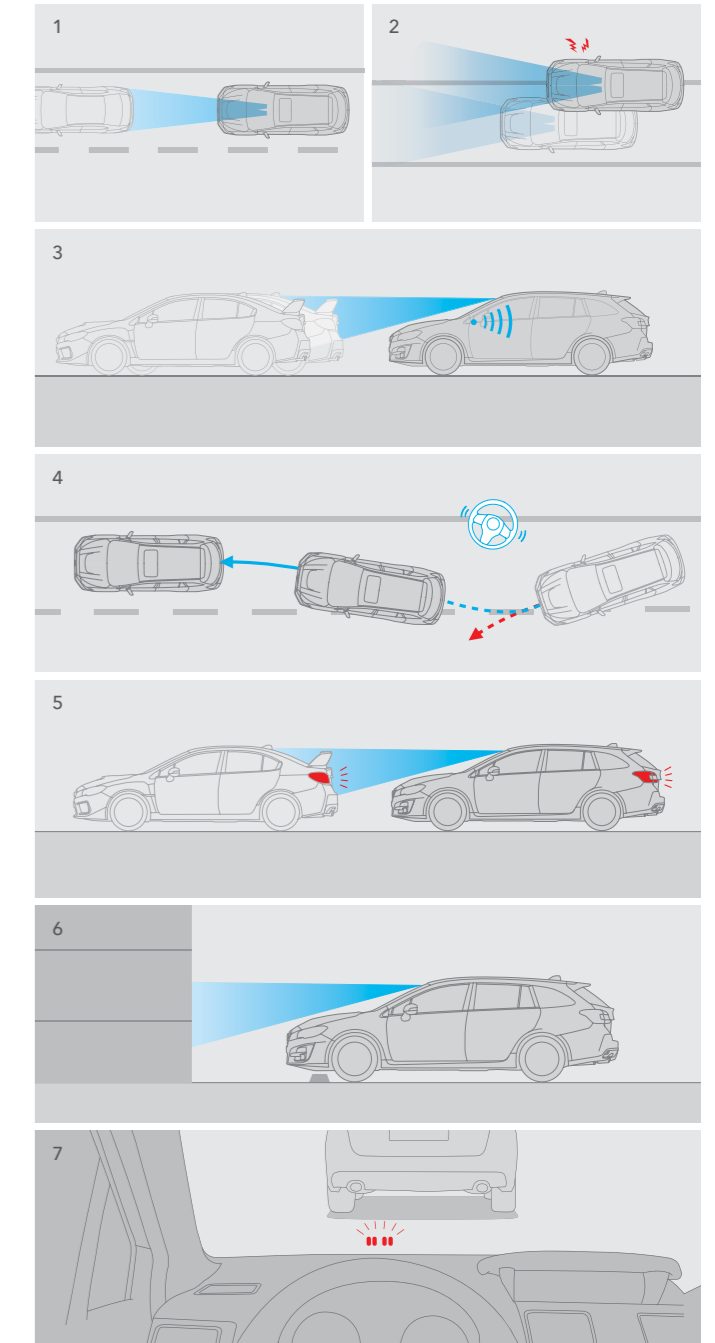
6 Pre-Collision Throttle Management

If the car is parked facing an obstacle, EyeSight will give the driver a visual and audible warning if they accidentally select drive instead of reverse. The system will also cut engine output to help avoid a frontal collision.

7 EyeSight Assist Monitor

When EyeSight detects a hazard, a series of LED warning lights are projected on to the base of the windscreen. This places information in your line of sight, so you can keep your eyes on the road and react faster to potential danger.

*1 EyeSight is a driving support system which may not operate optimally under all driving conditions or for all objects. The driver is always responsible for safe and attentive driving and observance of traffic regulations. See Owner's Manual for complete details on system operation and limitations for EyeSight including functions in this brochure.



ACTIVE SAFETY

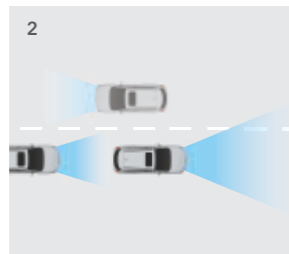
1 Subaru Rear Vehicle Detection (SRVD)*1

SUBARU Rear Vehicle Detection (SRVD) includes Blind Spot Monitoring, Lane Change Assist & Rear Cross Traffic Alert. Sensors placed at the rear of the vehicle alert you to vehicles in your blind spots for safer lane changes and can also warn you of potential collision danger when reversing out of a parking space.



2 High Beam Assist (HBA)*1

High Beam Assist (HBA) increases visibility and safety when driving at night by automatically toggling the high beams on and off when oncoming traffic is detected.



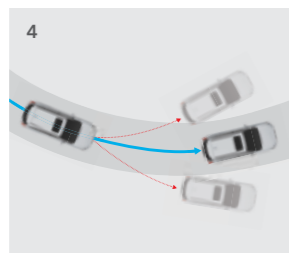
3 Brakes

The ventilated disc brakes feature lightweight aluminium rear calipers for a strong, progressive braking feel. The Antilock Braking System includes electronic brake-force distribution to reapportion front and rear braking pressure when the vehicle is loaded. For more predictable and controlled braking during an emergency, the SUBARU Levorg features both Brake Assist and Brake Override.



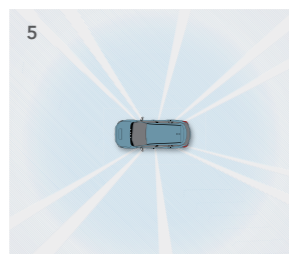
4 Vehicle Dynamics Control

Vehicle Dynamics Control (VDC) monitors and analyses if the vehicle is following the driver's intended course via an array of sensors. If the vehicle approaches the limits of stability while cornering or avoiding an obstacle, the AWD torque distribution, engine output and brakes at each wheel are adjusted to assist in keeping the vehicle on course.



5 Visibility in all directions

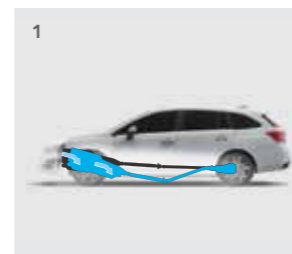
The SUBARU Levorg was designed to provide maximum visibility in all directions without compromising structural integrity and safety. Greater visibility helps the driver stay in control and see potential accidents before they happen.



PASSIVE SAFETY

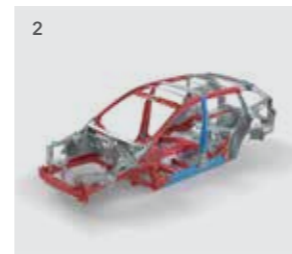
1 Cabin-protecting Layout

In the event of a collision, the low-mounted engine and gearbox are designed to both absorb the impact and drop safely below the passenger compartment, protecting occupants' legs. To allow for this movement, the cradle securing the engine is engineered to collapse, allowing the engine to slide downwards.



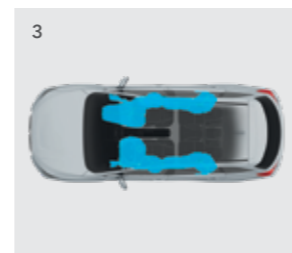
2 Ring-shaped Reinforcement Frame

The Ring-shaped Reinforcement Frame strengthens the passenger cabin from the roof to the doors, pillars and floor. This design helps to divert and dissipate impact energy away from the occupants in a collision. It also contributes to strengthening and lightening the chassis, leading to greater, reinforced protection.



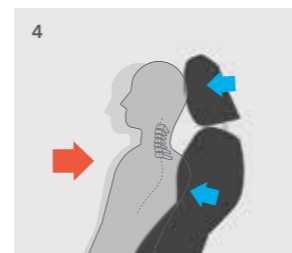
3 SRS*2 Airbags

Front SRS airbags, front side SRS airbags, curtain SRS airbags, and a knee SRS airbag are standard on Levorg to give all passengers a higher level of protection in the event of a collision.



4 Whiplash-reducing Front Seats

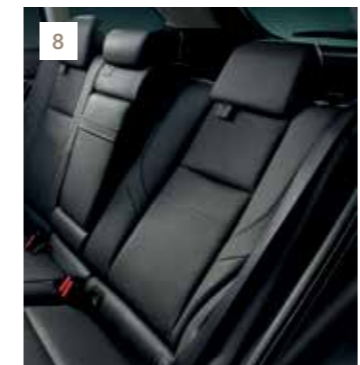
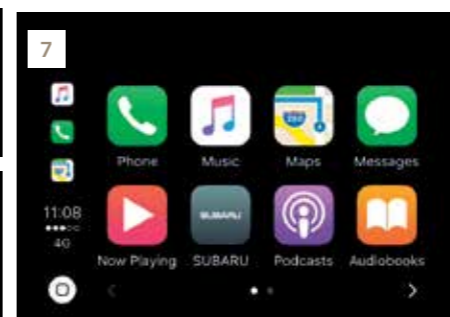
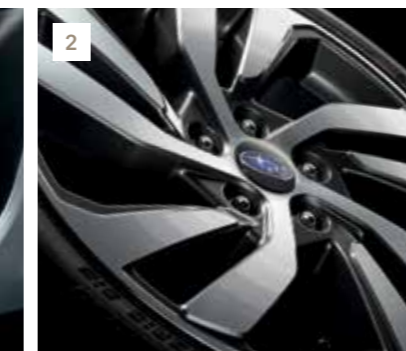
Designed to enhance comfort and help the driver feel more planted for better control, these seats can also help reduce the possibility of whiplash resulting from certain types of collisions.



*1 The driver is always responsible for safe and attentive driving and observance of traffic regulations. Please do not depend solely on SUBARU Rear Vehicle Detection or High Beam Assist for safe driving. There are limitations to the recognition features of these systems. See Owner's Manual for complete details on system operation and limitations.

*2 SRS: Supplemental Restraint System. Must be used with seatbelts.

FEATURES



1 LED Front Fog Lights

Powered by LEDs, the front fog lights emit a wide, flat beam that reduces glare in fog for added safety.

3 Keyless Entry With Push-Button Start System

With the key fob in your possession, you can unlock the front doors or boot just by gripping the handle and start the engine with a push of a button.

5 Front View Camera

The front view camera monitors a 180° area in front of the car that would normally be in the driver's blind spot. These images are displayed on the LCD multi-information display to aid manoeuvring at junctions or when parking against a wall.

7 Apple Carplay™ And Android Auto™

Apple CarPlay™ and Android Auto™ mirror compatible apps from your smartphone onto Levorg's touchscreen, allowing you to make phone calls and dictate text messages hands-free, reducing distractions when you're on the road*1.

9 Smart Rear View Mirror

When passengers or luggage obstruct your view, the smart rear view mirror improves visibility by displaying images from a camera mounted at the top of the rear windscreen.

2 18" Alloy Wheels

18" aluminium-alloy wheels give the SUBARU Levorg even more style and enhanced performance through excellent grip.

4 Tilt-Adjustable / Telescopic Steering Wheel

The tilt-adjustable and telescopic steering wheel can accommodate a wide range of preferences.

6 Reversing Camera

When you engage reverse, the reversing camera displays a live colour image along with guidelines to assist in parking manoeuvres.

8 Folding & Reclining Rear Seats

With four settings to choose from, the 40/20/40 folding rear seats quickly create even more flexible space.

10 USB Ports (Front and Rear)

Keep all your electronic devices fully charged with easily accessed USB power ports for both front and rear passengers.

*1 This functionality uses your smartphone's data.

LINEUP

LEVORG 2.0i GT LINEARTRONIC

DIMENSIONS

L x W x H: 4690 x 1780 x 1490 mm
(excl. door mirrors)

ENGINE

Horizontally opposed, 4-cylinder,
4-stroke, DOHC 16-valve, petrol

CAPACITY

1995 cc

MAX OUTPUT

149.5 PS @ 6,200 rpm

MAX TORQUE

198 Nm @ 4,200 rpm

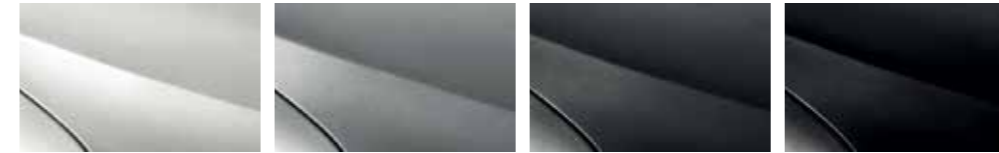
TRANSMISSION

Lineartronic, AWD



Ice Silver Metallic

EXTERIOR COLOURS



Crystal White Pearl Ice Silver Metallic Dark Grey Metallic Crystal Black Silica



Lapis Blue Pearl Pure Red

SEAT MATERIAL



Black Leather with Blue Stitching

ACCESSORIES

Personalise your ride.

Whilst every Levorg comes generously equipped, SUBARU accessories are the perfect way to tailor your SUBARU to your life and your style. Whether you want to add convenience, enhance functionality, or personalise your Levorg's appearance, SUBARU accessories are designed to provide the same fit and quality as your SUBARU vehicle. For more details, ask for the accessory brochure or visit your nearest SUBARU retailer.



STI Front Under Spoiler STI Side Under Spoiler STI Rear Under Spoiler



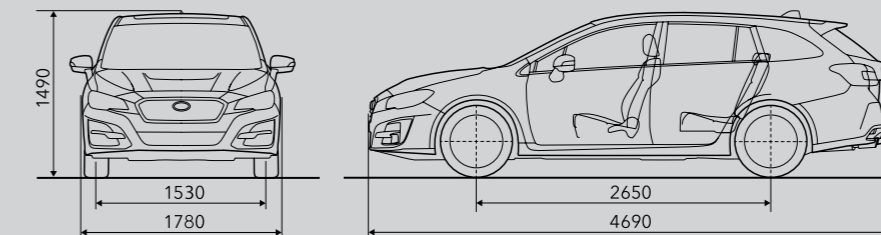
18-inch STI Aluminium-alloy Wheel Tailgate Illumination Cargo Step Panel (Resin)



Cargo Tray Low Carpet Mat Premium

DIMENSIONS

Dimensions are measured in accordance with standard measurement of SUBARU CORPORATION.



Not all features, options, or packages are available for all models and regions. See your specification sheet for availability. Please contact your local authorised Subaru retailer for more details.

SUBARU CORPORATION reserves the right to alter specifications and equipment without notice. Details of specifications, equipment, colour availability and the accessory lineup are subject to suit local conditions and requirements. Please enquire at your local retailer for details of any changes that might be required for your area.

SPECIFICATIONS

Item	SYMMETRICAL ALL-WHEEL DRIVE (AWD)	
	2.0i GT Lineartronic CVT	
EXTERIOR		
Automatic LED headlights		•
Steering responsive headlights		•
High beam assist		•
Pop-up type headlight washers		•
LED front fog lights		•
Rear fog lights		•
Power-folding door mirrors with built-in LED indicators		•
Automatic rain-sensing windscreen wipers		•
18" alloy wheels		•
Side sill spoilers		•
Roof spoiler		•
Shark fin antenna		•
Privacy glass for rear doors, rear quarters & rear window		•
Twin tailpipe		•
SEATING & TRIM		
Leather sports steering wheel & gearshift knob with blue over stitching		•
Leather sports front seats with blue over stitching		•
8-way power adjustable driver's seat with lumbar support		•
Heated front seats		•
40/20/40 split folding & reclining rear seats		•
Stainless steel front door sills		•
COMFORT & CONVENIENCE		
Power windows*1		•
Remote control central locking		•
Keyless entry & push button start system		•
Welcome lighting*2		•
One-touch lane change indicators		•
Map lights		•
Illuminated vanity mirrors (driver & front passenger)		•
Front cup holders (centre console)		•
Door pockets with bottle holders		•
Fuel lid lock release		•
Boot hooks		•
Luggage hooks		•
Rear seat release in boot space		•
Retractable parcel shelf		•
Boot under floor storage		•
Tyre repair kit		•
CLIMATE CONTROL		
Dual-zone automatic air-conditioning		•
Windscreen wiper de-icer		•
Heated door mirrors		•
Heated rear window with timer		•
ENTERTAINMENT		
SUBARU infotainment & audio system: 1 CD & 6 speakers		•
7" multi-function colour touchscreen		•
Apple CarPlay™ & Android Auto™		•
Satellite navigation		•
Voice recognition system		•
Steering wheel mounted audio & cruise controls		•
Bluetooth®		•
Two 12 volt power outlets (instrument panel & centre console)		•
Dual USB ports & auxiliary jack in centre panel		•
Dual USB ports in centre console		•
Dual USB ports for rear passengers		•

Item	SYMMETRICAL ALL-WHEEL DRIVE (AWD)	
	2.0i GT Lineartronic CVT	
CONTROLS & INSTRUMENTS		
Stop & start system*3		•
Electric parking brake		•
5.9" LCD multi-function display*4		•
Electro-luminescent gauges with 3.5" colour LCD display*5		•
Tilt-adjustable/telescopic steering wheel		•
Paddle shift		•
Aluminium pedals		•
Adaptive cruise control		•
DRIVABILITY		
SI-drive (SUBARU Intelligent Drive)*6		•
Vehicle dynamics control system		•
Active torque vectoring		•
Auto vehicle hold		•
SAFETY		
Eyesight - includes: - Adaptive cruise control - Pre-collision braking - Pre-collision throttle management - Lane sway and departure warning - Lane keep assist - Lead vehicle start alert		•
SUBARU rear vehicle detection - includes: - Blind spot monitoring - Lane change assist - Rear cross traffic alert		•
Reversing camera		•
Smart rear view mirror		•
Front view monitor		•
Front SRS*7 airbags		•
Front side SRS*7 airbags (driver & front passenger)		•
Curtain SRS*7 airbags		•
Knee SRS*7 airbag		•
Side door reinforcement beams		•
Steering column support beam		•
Rear seat headrests for 3 seating positions		•
Whiplash reducing front seats		•
Seatbelt indicator (driver & all passengers)		•
Height adjustable front seatbelts with pretensioners & load limiters		•
Rear 3-point seatbelts for 3 seating positions		•
ABS (anti-lock braking system) with EBF (electronic brake force distribution)		•
Isofix adapted child seat anchors (with tether anchors)		•
Child-proof rear door locking		•
Thatcham cat 1 alarm system & immobiliser		•

*1 Front side and rear side windows have auto up/down function with pinch protection.

*2 Side lights, tail lights and license plate lights will turn on when exiting the vehicle.

*3 The Stop & Start system will automatically stop and restart the engine when the car comes to a standstill to reduce fuel consumption and emissions.

*4 Displays: front view monitor, fuel economy screen, eco-evaluation screen, driving condition, clock with outside temperature and maintenance information etc.

*5 Displays: current fuel consumption, average fuel consumption, driving range and SI-Drive indicator.

*6 Two available SI-Drive modes: Intelligent mode & Sport mode.

*7 SRS: Supplemental Restraint System. Must be used in conjunction with seatbelts.

Item		SYMMETRICAL ALL-WHEEL DRIVE (AWD)	
		2.0i GT Lineartronic	
		CVT	
ENGINE			
Type	Horizontally-opposed, 4-cylinder, 4-stroke, petrol engine		
Valve train	DOHC 16-valve		
Bore/stroke	mm	84.0 x 90.0	
Capacity	cc	1,995	
Compression ratio	10.5		
Fuel system	Petrol naturally aspirated		
Fuel tank capacity (approx.)	l	60	
PERFORMANCE			
Max. output	PS @ rpm	149.5 @ 6,200	
Max. torque	Nm @ rpm	198 @ 4,200	
Max. speed	mph	121	
Fuel consumption*1 (WLTP)	Low	mpg	22.03
	Mid	mpg	34.58
	High	mpg	39.12
	Extra-high	mpg	32.73
	Combined	mpg	32.62
CO ₂ emissions*1	Combined - WLTP	g/km	196
Regulation emission standard	Euro 6d-TEMP-EVAP		
DRIVETRAIN			
All-wheel drive type	Active torque split AWD system		
DIMENSIONS & WEIGHT			
Overall length	mm	4,690	
Overall width (excl. door mirrors)	mm	1,780	
Overall height	mm	1,490	
Wheelbase	mm	2,650	
Track	Front	mm	1,530
	Rear	mm	1,540
Ground clearance (at kerb weight)	mm	135	
Boot volume*2 (seats up/seats down/seats down to roof)	l	522/944/1446	
Seating capacity	persons	5	
Kerb weight	kg	1,564	
Towing capacity	kg	1,500	
TRANSMISSION			
Gear ratio	D range (Lineartronic)	3.601-0.513	
	Reverse	3.687	
Final drive axle ratio	3.900		
CHASSIS			
Steering	Rack and pinion		
Suspension (4-wheel independent)	Front	MacPherson strut type	
	Rear	Double wishbone type	
Minimum turning circle (between pavements/walls)	m	5.4/5.9	
Brakes	Front	Ventilated disc brakes	
	Rear	Ventilated disc brakes	
Tyre/wheel size	225/45R18, 18 x 7.5"J		

*1 MPG figures are EU test figures for comparative purposes and may not reflect real driving results. There is a new WLTP test used for fuel consumption and CO₂ figures. Only compare fuel consumption and CO₂ figures with other cars tested to the same technical standard. The fuel consumption you achieve in real life conditions and CO₂ produced will depend upon a number of factors including accessories fitted (post-registration), variations in weather, driving styles and vehicle load etc. Fuel consumption and CO₂ emissions: According to EC 715/2007- 2017/1347 (BG).

*2 Measured by VDA method.



SUBARU

Confidence in Motion

† The service intervals for the SUBARU Levorg are every 12 months/12,000 miles, whichever comes sooner. The SUBARU Levorg is covered by a 5 Year/100,000 miles (whichever is sooner) Limited Warranty. This comprises of a standard 3 Year/60,000 miles (whichever is sooner) Manufacturer's Warranty (bumper to bumper, excluding clutch driven plate) and an Extended Warranty that applies to the powertrain only, provided by the importer, to complete the 5 Year/100,000 miles (whichever is sooner) Limited Warranty. All vehicle bodywork is covered by a 12 Year Anti-Corrosion Warranty and paintwork is covered by a 3 Year/60,000 miles (whichever is sooner) Warranty. Added reassurance is provided by a comprehensive 3 Year Recovery and Assistance Programme valid in the UK and Europe. For general terms and conditions visit SUBARU.co.uk.

Technical data and equipment based on the latest information available at the time of printing. SUBARU (UK) Ltd reserves the right to make changes at any time, without notice, in colours, materials, design, prices, equipment and specifications and to discontinue models. Customers are advised to consult their SUBARU dealer on the precise details of warranties/guarantees and vehicles available for sale. Models specified are strictly subject to availability. Owing to the limitations of printing processes, the colours reproduced may not exactly match product colours. The contents of this brochure are the copyright of SUBARU (UK) Ltd and may not be copied or displayed for commercial purposes without the express permission of SUBARU (UK) Ltd. © SUBARU (UK) Ltd. E & O.E.

SUBARU (UK) Ltd.

For details of your nearest SUBARU dealer phone 03303 335117 or visit SUBARU.co.uk.

Calls (to 03 numbers) cost no more than calls to geographic numbers (01 or 02) and must be included in inclusive minutes and discount schemes in the same way. Calls from landlines are typically charged up to 9p per minute; calls from mobiles typically cost between 3p and 40p per minute. Calls from landlines and mobiles are included in free call packages.

5 YEAR
WARRANTY†

SLVB006